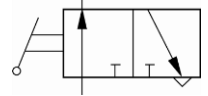
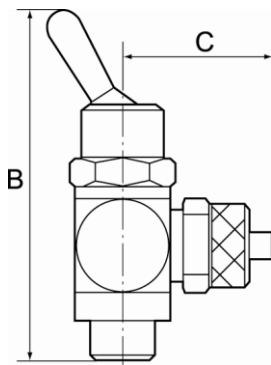


Manually operated toggle valves, 3/2-way types.
 For all applications where compressed air must be switched on or off quickly and easily or a cylinder operated manually.
 Designed as a banjo-type valve with a hollow bolt and ring piece.
 Suitable for screwing directly into the equipment or for panel mounting.
 Compact type of construction, also ideal where space is restricted.



Operating pressure:	Max. 8 bar
Temperature range:	-20 °C to +80 °C
Hollow bolt, pivoting arm, toggle:	Nickel-plated brass
Valve trim:	Brass with a bare metal surface
Seal:	NBR
Captive seals:	Polyamide (glass fibre-reinforced)
Panel thread:	M12x0.75 (max. plate thickness 4 mm)



361.014-6

3/2-way-toggle valves

pressure port on hose side, quick-lock screw fitting

Type No.	Art. No.	Version	Thread	For pipe mm	a/f mm	B mm	C mm
361.018-1/8	107023	3/2-way	G 1/8	G 1/8 female thread	14	55.0	16.0
361.018-5	107024	3/2-way	G 1/8	5/3	14	55.0	25.0
361.018-6	107025	3/2-way	G 1/8	6/4	14	55.0	25.0
361.018-8	107026	3/2-way	G 1/8	8/6	14	55.0	25.0
361.014-1/4	107027	3/2-way	G 1/4	G 1/4 female thread	17	60.0	22.0
361.014-6	107028	3/2-way	G 1/4	6/4	17	60.0	26.5
361.014-8	107029	3/2-way	G 1/4	8/6	17	60.0	27.5
361.014-10	107030	3/2-way	G 1/4	10/8	17	60.0	28.5